



# BONESEED

*Chrysanthemoides monilifera* subsp. *monilifera*

is a Weed Of National Significance (WONS)



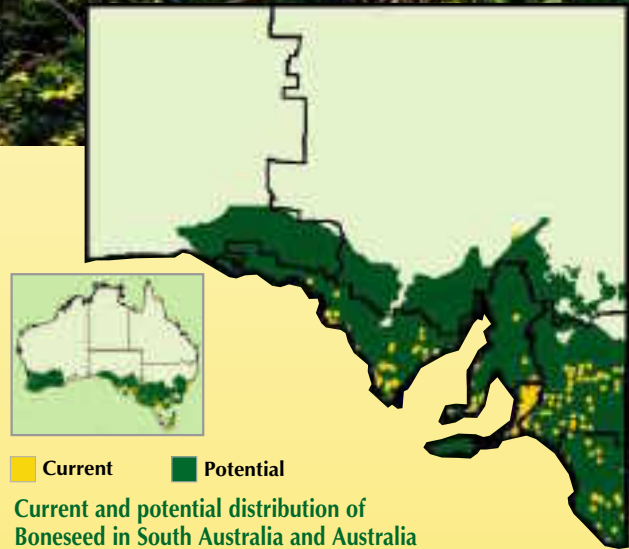
## A threat to South Australia

### BONESEED:

Invades native bushland and forms dense thickets that smother native plants.

Alters habitat and displaces food plants of native birds and other animals.

Regenerates quickly and outcompetes native plants after fire.



### WHAT YOU CAN DO TO HELP

Remove boneseed from your garden or property, as it can spread easily to native bush.

Join a local Coastcare or Landcare group and help remove boneseed from natural areas.

#### More Information?

Contact your local weeds officer or see  
Weeds Australia Website: [www.weeds.org.au](http://www.weeds.org.au)

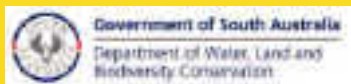


Photo credits (top to bottom):  
Boneseed flower. Photo: Glen Sanders  
Boneseed infestations, You Yangs, Victoria. Photo: CSIRO  
Boneseed flowers and fruit. Photos: Hillary Cherry